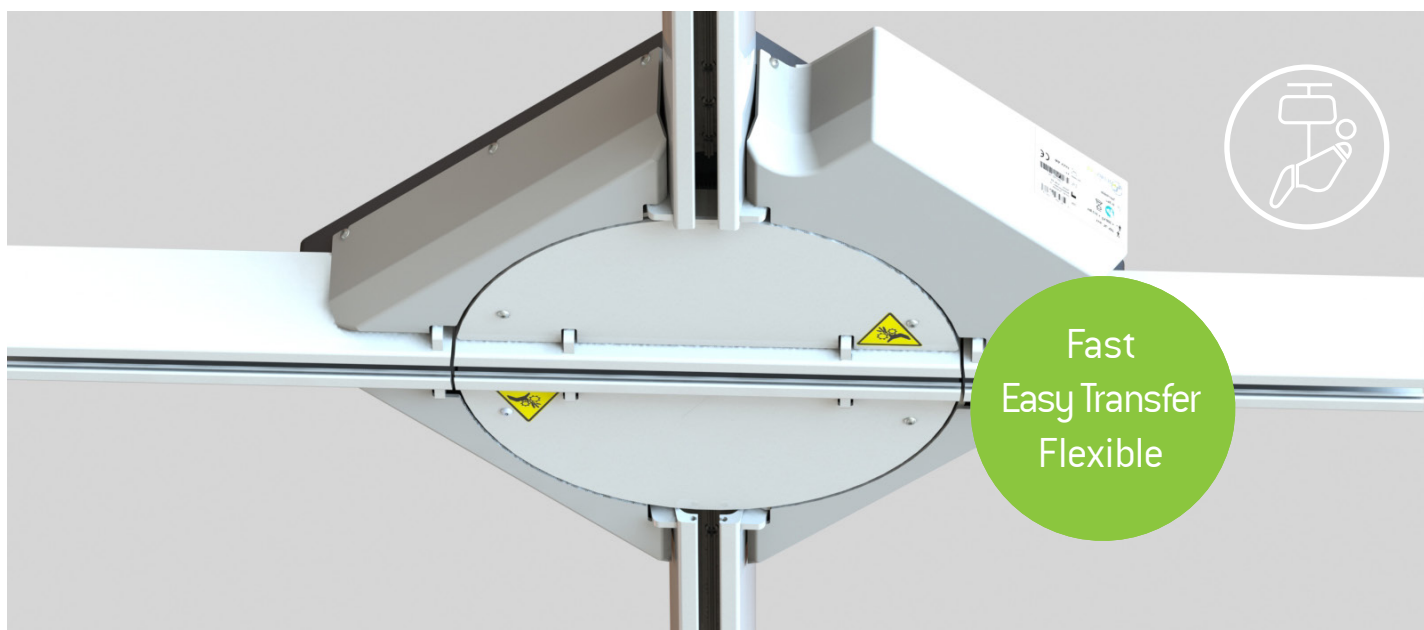


# turntables



A turntable is an integrated part of a fixed rail system that makes it possible to move the overhead lift from one rail to another perpendicular rail. The lift route can be switched in a multi-directional track by using the two, three or four-track junction on the turntable. Several lifts can be in the complete rail system, however only one lift at a time can be used in the turntable.

## Smooth Operation

Our turntable is capable of handling multiple lifts one at a time with a smooth and silent operation that does not inconvenience the user or caregiver. Transferring from one rail to another is quick and intuitive. Simply move the lift into the activation position to start the rotation of the turntable. The complete transfer to a new rail takes less than 5 seconds when the lift has entered the activation position. With four exit points, the overhead lift's travel direction can easily be moved to another rail at 90° from the original rail in either the left or right direction.

## Handset Free

With an automatic start, the turntable

requires no hand control which ensures quick and easy operation. The moment the lift enters the turntable, it is activated into action, allowing the user to continue the lifting process without delay.

## Optimal Features

Our turntable allows for greater flexibility and room coverage, especially in tight spaces that require multiple lifts, such as a bathroom. Although turntables are primarily used in hospitals and institutions, they can certainly be used in a home environment with all our lifts.

### HUMAN CARE SWEDEN (HQ)

Årstaängsvägen 21B  
117 43 Stockholm  
Phone: +46 8 665 35 00  
Fax: +46 8 665 35 10  
info.se@humancaregroup.com

### HUMAN CARE AUSTRALIA

Unit 4, 49 Bertie Street  
Port Melbourne, VIC 3207  
Phone: +61 1300 132 736  
Fax: +61 (03) 9645 4954  
info.au@humancaregroup.com

### HUMAN CARE CANADA

10-155 Colonnade Road  
Ottawa, ON K2E 7K1  
Phone: +613.723.6734  
Fax: +613.723.1058  
info.ca@humancaregroup.com

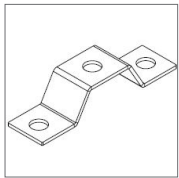
### HUMAN CARE NEDERLAND

Elspeterweg 124  
8076 PA Vierhouten  
Phone: +31 577 412 171  
Fax: +31 577 412 170  
info.nl@humancaregroup.com

### HUMAN CARE UNITED STATES

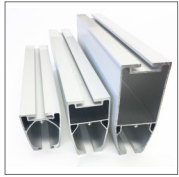
8006 Cameron Road, Suite K  
Austin, TX 78754  
Phone: +512.476.7199  
Fax: +512.476.7190  
info.us@humancaregroup.com

## Accessories



### Attachment Kit

Used to join turntable to rails. Part no. 50167



### Rails

Use with installed P87, P120 and P180 rails (sold separately). Works with traverse system.

## Features



### Fast Operation

Less than 5 seconds to transfer when the lift enters the activation position.



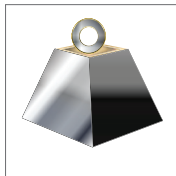
### Transfer Alert

Beeping sound commences when lift is ready to transfer to rail.



### Smooth and Silent

Smooth, silent operation without client inconvenience.



### Safe Working Load

220kg / 485 lb

## Lift Compatibility



**Altair 150, 220 or 300**  
Compatible with all Altair models. Part no. 55200, 55210 or 55220.



**Roomer S**  
Compatible with Roomer S. Part no. 55300



**HeliQ**  
Compatible with all HeliQ models. Part no. 55100, 55110 or 55120



**HeliQ Power Traverse**  
Compatible with all HeliQ PT models. Part no. 55103, 55140 or 55150

## Technical Specifications

Description	
Part number	91884
Dimensions	82.5cm x 82.5cm x 12cm / 32.4" x 32.4" x 4.7"
Product Weight	28kg / 62lb
Specifications	Electronic Power, Handset-Free Operation Finish colour RAL9016
Operating Time	< 5 seconds (cycle commences when the traverse is in correct position and lift enters activation position)
Compliances	ISO 10535 IP 11
Care	Wipe off with regular mild, neutral detergent Disinfect with regular antiseptic agent

This product is manufactured in accordance with all relevant ISO standards.



Learn more about this product



## Follow Us on Social Media



facebook.com/humancareworld



instagram.com/humancaregroup



linkedin.com/company/human-care-ab



pinterest.com/humancaregroup



youtube.com/channel/UC7fjInh3zTjRxOP1IDf2DaQ