

Our Gate System enables transfers from an X-Y or traverse system to a straight rail, or the other way around. It is an integral part of the rail systems commonly used in health care facilities, especially in intensive care and rehabilitation. Our Gate System is compatible with all our lifts.

Smooth Operation

Our Gate System is capable of handling multiple lifts at once with a smooth and silent operation that does not inconvenience the user or caregiver. Transferring from one rail to another is quick and intuitive. Simply position the traverse rail and move the lift into the activation position. An integrated beeping sound makes it easy to know when it is ready to transfer. The complete transfer takes less than 3 seconds when the traverse is in the correct position and the lift has entered the activation position to enable passage.

Handset Free

With an automatic start, the gate requires no hand control which ensures quick and easy

operation. The moment the lift enters the gate, it is activated into action, allowing the user to continue the lifting process without delay.

Optimal Features

Our Gate System allows for greater flexibility and room coverage, especially in tight spaces that require multiple lifts, such as a bathroom. Although gates are primarily used in hospitals and institutions, they can certainly be used in a home environment with all our lifts.

HUMAN CARE SWEDEN (HQ)

Årstaängsvägen 21B
117 43 Stockholm
Phone: +46 8 665 35 00
Fax: +46 8 665 35 10
info.se@humancaregroup.com

HUMAN CARE AUSTRALIA

Unit 4, 49 Bertie Street
Port Melbourne, VIC 3207
Phone : +61 1300 132 736
Fax : + 61 (03) 9645 4954
info.au@humancaregroup.com

HUMAN CARE CANADA

10-155 Colonnade Road
Ottawa, ON K2E 7K1
Phone: +613.723.6734
Fax: +613.723.1058
info.ca@humancaregroup.com

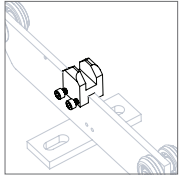
HUMAN CARE NEDERLAND

Elspeterweg 124
8076 PA Vierhouten
Phone: +31 577 412 171
Fax: +31 577 412 170
info.nl@humancaregroup.com

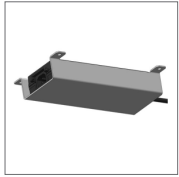
HUMAN CARE UNITED STATES

8006 Cameron Road, Suite K
Austin, TX 78754
Phone: +512.476.7199
Fax: +512.476.7190
info.us@humancaregroup.com

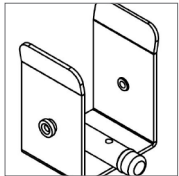
Accessories



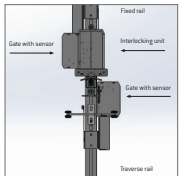
Trolley Support Kit
Used on traverse rollers to support gate sensors. Included with system. Replacement part no. 55654



Power Supply
Attached to the ceiling for continuous power. Included with system.



Drilling Fixture
Simplifies installation by assisting to easily line up drilling holes for end stops and sensors. Part no. 55714



Rails
Use with installed P87, P120 and P180 rails (sold separately). Works with traverse system.

Features



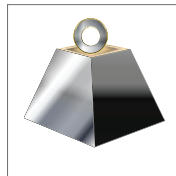
Fast Operation
Less than 3 seconds to transfer when the lift enters the activation position.



Transfer Alert
Beeping sound commences when lift is ready to transfer to rail.



Smooth and Silent
Smooth, silent operation without client inconvenience.



Safe Working Load
220kg / 485 lb

Lift Compatibility



Altair 150, 220 or 300
Compatible with all Altair models. Part no. 55200, 55210 or 55220.



Roomer S
Compatible with Roomer S. Part no. 55300



HeliQ
Compatible with all HeliQ models. Part no. 55100, 55110 or 55120



HeliQ Power Traverse
Compatible with all HeliQ PT models. Part no. 55103, 55140 or 55150

Technical Specifications

Description	
Part number	55721
Dimensions	12cm x 4 cm x 20cm / 3.93" x 1.57" x 7.87"
Product Weight	10kg / 22lb
Specifications	Electronic Power, Handset-Free Operation Finish colour RAL9016
Operating Time	< 3 seconds (cycle commences when the traverse is in correct position and lift enters activation position)
Compliances	ISO 10535 IP 11
Care	Wipe off with regular mild, neutral detergent Disinfect with regular antiseptic agent

This product is manufactured in accordance with all relevant ISO standards.



Learn more about this product



Follow Us on Social Media



facebook.com/humancareworld



instagram.com/humancaregroup



linkedin.com/company/human-care-ab



pinterest.com/humancaregroup



youtube.com/channel/UC7fjINh3zTjRx0P1IDf2Da0