


RECONDITIONING INSTRUCTIONS



Rebel

This reconditioning instruction applies to the rollator and its available accessories and spare parts.

 To continue to work safely and securely for the user, the rollator should be checked and serviced once a year. The following measures are therefore recommended.

Cleaning & Disinfection

Water and a mild detergent are recommended for cleaning. Machine wash at 60°C for 10 minutes can be used, drying maximum 70°C for 10 minutes; observe the post-treatment requirements. Avoid flushing with pressure against bearings (wheels, front forks). **NB** Do not use white spirit, petrol or other solvents.

Disinfection is performed by qualified personnel with appropriate protective equipment and according to the disinfectant manufacturer's instructions. When cleaning, use a sponge or soft cloth that will not scratch the product. Use an approved chemical disinfectant containing 70-80% ethanol. Do not use abrasive cleaners, chlorine or phenol. If you have any questions about disinfection or suitable disinfectants, please contact Human Care.

Post-treatment

Immediately after washing, rotate all bearings (wheels, front fork) 10 turns so that the bearing grease can be distributed. Blow joints, tight spaces and drainage holes clean, then spray with thin oil.

Paint

Check for damage to the paint. If there is any damage to the paint, use a touch-up paint to reduce the risk of corrosion. Order from Human Care, Art. No.: F2 (see p. 3).

Tube body

Check welds and screw connections. In the event of serious corrosion, replace the rollator.

Handle

Check that the handle tubes can be pushed down into the chassis. It should not be possible to rotate the handle; replace grip if necessary. **NB** Use only alcohol without hydrating agents.

Brakes

Check that both the moving and parking brake are working. Cables should be whole and clamped on.



Wing knob

Check the function.

Reflectors

Check that the reflectors are in place and are visible.

CE & MD Marking

Check that the CE and MD markings are in place and that they can be read.

Wheels

Check that the wheels are not worn and that they spin easily without noise.

Lubrication

Gate bushings and hinges should work without noise. Lubricate if necessary.

Front forks

Check that the attachment and bearings are not loose, check that the front fork can easily rotate and rock 4-6 times in a horizontal position. If adjustment of the front fork is to be done, the M12 and M6 screws must be replaced. Ensure that the locking screw above the front fork is fully screwed in.

The folding mechanism

It should be complete and the lock should work.

Seat cushion

Check that the cushion is secure and that the screws are tight.

Stability

Check that all wheels are firmly on the ground and that there is no distortion in the chassis.

Test run

Perform a final check through a test run.



RECONDITIONING INSTRUCTIONS

Please note!



The reconditioning must only be done by a person who has good knowledge of how the work is to be performed. Incorrect reconditioning can result in an accident or incident. In case of doubt, always contact a dealer.

To ensure safe and secure use, only original parts should be used; these have been developed and tested against current product standards on the market. The product warranty and CE marking are only valid if original parts are used.

When dismantling wheels, the wheel nut and pin bolt must be replaced, as they contain a self-locking device that will be destroyed when dismantled.

If corrosion has occurred that is more serious than surface rust, remove the rollator from service and leave for recycling.

Intended use

The rollator must only be used as a walking support and as a seat when standing still. Owner repair of the rollator is not allowed.

Special instructions for Rebel low and reinforced.

Unique spare parts for low and reinforced Rebel models are listed last in the spare parts list. These spare parts may only be used with these products. Note that other spare parts cannot always be used with these models.

Product number:
Owner:
Remarks / Notes:
Actioned by:
Place and date

Spare parts list

No.	Name	Amount	Item no.	Other information
1 2. 3	Wheel kit Complete wheel Wheel nut Pin bolt	 	89015	<i>For Rebel reinforced use 89086 for rear wheels. The pin bolt and wheel nut must be replaced when removing the wheel.</i>
2. 3	Pin bolt & wheel nut Wheel nut Pin bolt	 	89032	<i>For Rebel reinforced use 89091 for rear wheels. The pin bolt and wheel nut must be replaced when dismantling.</i>
25 2. 3	Front fork kit Front fork Ball bearing Wheel nut Pin bolt Cover hat Screw M12x56 Screw M6x7 Washer Lock washer	 2. 	89099	<i>With effect from 200907 (Rebel low from 201304). The pin bolt and wheel nut must be replaced when removing the fork. Front fork kit No.: 89025, only for Rebel rollators produced up to and including April 2024.</i>
4 5 6 7 8 9 10 11 12 2. 3	Brake kit Brake inner part Brake outer part Tyre brake rivet Wear washer Screw M6x6 Washer Adjustment screw with counter nut Spring Screw M6x16 Wheel nut Pin bolt	 	89095	<i>The pin bolt and wheel nut must be replaced when disassembling the brake. NB Separate wheel nut and pin bolt for Rebel reinforced. Add 89091.</i>
7	Wear washer		10-004	<i>The wear washer is turned with wear.</i>
13 14 15	Handle kit Handle tube Handbrake complete ERGO Handle	 	89055	<i>For left and right.</i>
15	ERGO Handle		20-024	
23	Fold lock		73004	
not in picture	Handle kit Rebel High	 	92903 92904	Right Left (Incl: brake, brake cable and high handle tube)

RECONDITIONING INSTRUCTIONS

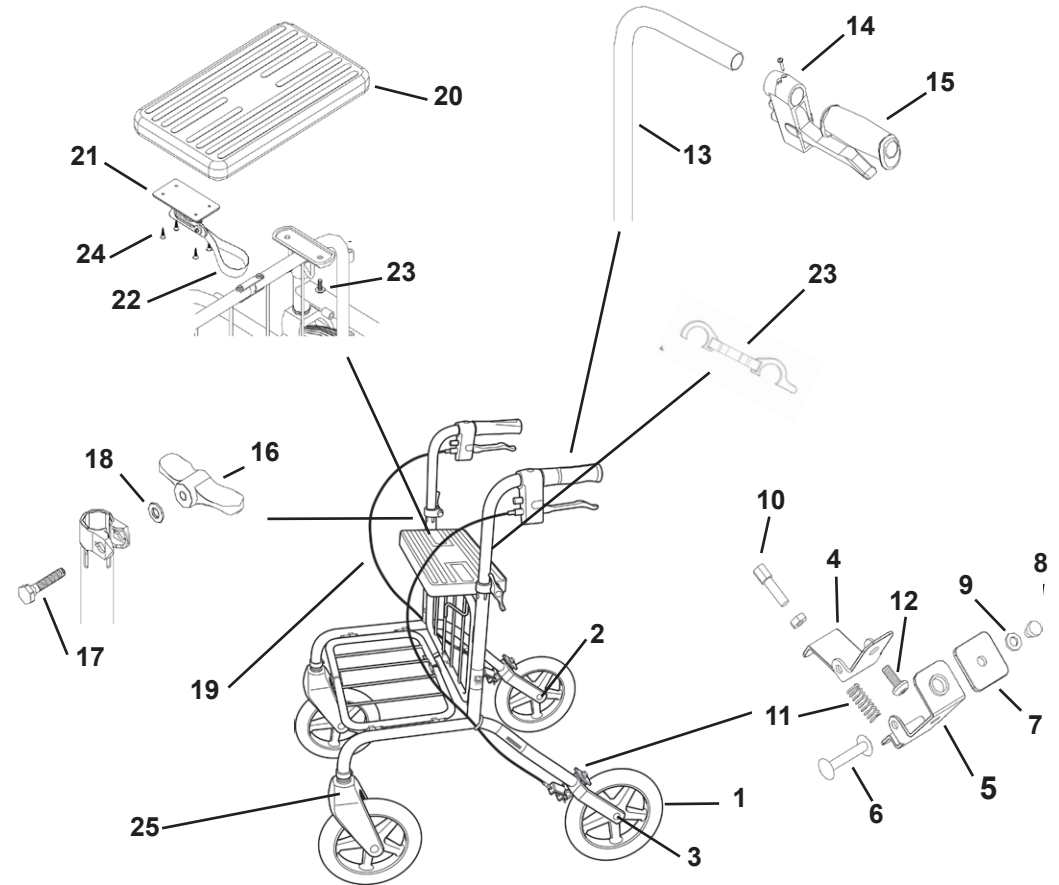
Wing knob complete			50937	<i>Lubricate the wing knob if necessary.</i>
16	Wing knob	1		
17	Screw	1		
18	Washer	1		
Cable complete			89050	
	Cover	1		
	Cable	1		
	Cable lock	1		
	End closure	1		
Seat kit			89020	
20	Seat cushion	1		
21	Gate lock	1		
22	Draw loop	1		
23	Screw M6x20	1		
24	Gate lock screw	4		
Seat complete			89070	
20	Seat cushion	1		
23	Screw M6x20	2		
	Gate protection	1	50949	
22	Draw loop	1	10-009	
Gate lock kit			10-018	
21	Gate lock	1		
24	Gate lock screw	4		
22	Draw loop	1		
	Reflector		00028	
	Touch-up paint		F2	

Spare parts Rebel low (Item No.: 21111, 21211, 21311, 21411)

Front fork				<i>Valid until 201303</i>
	Protective knob	1	20-014	
	Locking ring	1	00111	
	Spacer	1	00136	
	Spring	1	00130	
	Washer	1	20-030	
	Front fork	1	200-006	<i>The Pin bolt and wheel nut must be replaced when removing the fork.</i>
	Brake bearing	2	20-026	
	Cover hat	1	70886	<i>With effect from 201304</i>

Spare parts Rebel reinforced (Item No.: 71221, 71321, 71421)

Rear wheel kit			89086	<i>Pin bolt and wheel nut must be replaced when removing wheel</i>
1	Complete wheel	1		
2	Wheel nut	2		
	Pin bolt	1		
	Handle	1	89033	<i>Dismantling the upper part of the reinforcing rod is necessary when replacing the handle.</i>
Pin bolt & Wheel nut for rear wheel			89091	<i>The pin bolt and wheel nut must be replaced when dismantling.</i>
2	Wheel nut	2		
	Pin bolt	1		



• Årstaängsvägen 21B, 117 43 Stockholm •
 • Tel. +46 (0)8 - 510 132 00 • Fax +46 (0)8 - 665 35 10 •
 • www.humancare.se •