

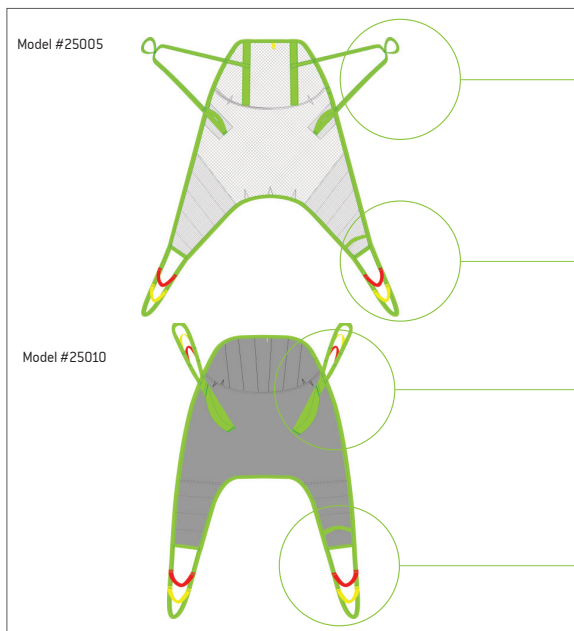


HUMAN CARE

Your Life. Your Way.

Fitting Protocol

Full Body Sling
Model 25005, 25010



☐ Green Strap

Extension Loops

- ☐ 21180-10 (10cm/3.9")
☐ 21180-15 (15cm/5.9")
☐ 21180-20 (20cm/7.8")
☐ 21180-25 (25cm/9.8")
☐ 21180-35 (35cm/13.7")

☐ Green Strap

☐ Yellow Strap

☐ Red Strap

Extension Loops

- ☐ 21180-10 (10cm/3.9")
☐ 21180-15 (15cm/5.9")
☐ 21180-20 (20cm/7.8")
☐ 21180-25 (25cm/9.8")
☐ 21180-35 (35cm/13.7")

☐ Green Strap

☐ Yellow Strap

☐ Red Strap

Extension Loops

- ☐ 21180-10 (10cm/3.9")
☐ 21180-15 (15cm/5.9")
☐ 21180-20 (20cm/7.8")
☐ 21180-25 (25cm/9.8")
☐ 21180-35 (35cm/13.7")

☐ Green Strap

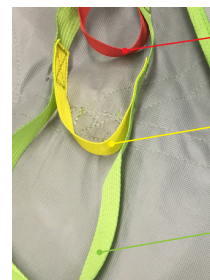
☐ Yellow Strap

☐ Red Strap

Extension Loops

- ☐ 21180-10 (10cm/3.9")
☐ 21180-15 (15cm/5.9")
☐ 21180-20 (20cm/7.8")
☐ 21180-25 (25cm/9.8")
☐ 21180-35 (35cm/13.7")

Choose the loop combination that will give the most comfortable and safe suspension angle, keeping in mind the patient's ability to support themselves.



Red Strap
Upright Position
Least hip angle

Yellow Strap
Semi-Recumbent
Mid-hip angle

Green Strap
Increased Recline
Less hip flex and
greatest angle

Match colours on both sides of the patient for a 90 degree angle in the hips.

☐ **Model 25005 - Polyester Net**

☐ **Model 25010 - Polyester**

Maximum User Weight: 250kg/551lb (JM to XL) 300kg/661lb (XXL to XXXL)

Transfer Situation:



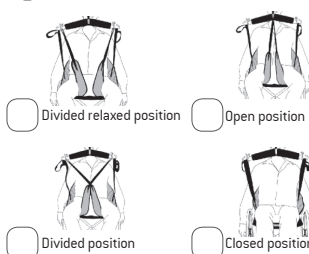
Available sizes:

☐ Indicate size required

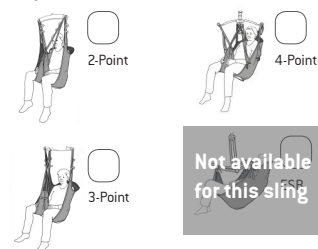


[Note: Size JM for Model #25005 only, Sizes XXL and XXXL for Model #25010 only]

Leg Placement:



Suspension:



Accessories required:



- ☐ 21146 Leg Padding - Small
☐ 21146 Leg Padding - Medium
☐ 21146 Leg Padding - Large



- ☐ 25102 Reinforced Leg Support - One Size



- ☐ 50866 Upholstered Cover for Hanger Bar. **Do not use in wet environments.**

Patient Information:

Name

Facility

Room

Lift Used

Hanger Bar Used

HUMAN CARE SWEDEN (HQ)

Årstaängsvägen 21B
117 43 Stockholm
Phone: +46 8 665 35 00
Fax: +46 8 665 35 10
info.se@humancaregroup.com

HUMAN CARE AUSTRALIA

Unit 4, 49 Bertie Street
Port Melbourne, VIC 3207
Phone: +61 1300 132 736
Fax: +61 (03) 9645 4954
info.au@humancaregroup.com

HUMAN CARE CANADA

10-155 Colonnade Road
Ottawa, ON K2E 7K1
Phone: +613.723.6734
Fax: +613.723.1058
info.ca@humancaregroup.com

HUMAN CARE NEDERLAND

Elspeterweg 124
8076 PA Vierhouten
Phone: +31 577 412 171
Fax: +31 577 412 170
info.nl@humancaregroup.com

HUMAN CARE UNITED STATES

8006 Cameron Road, Suite K
Austin, TX 78754
Phone: +512.476.7199
Fax: +512.476.7190
info.us@humancaregroup.com

The Full Body sling is a comfortable sling without reinforcements, handles or padding. It offers good support for the entire body and can be used for most lifting situations and fits most patients. It is designed to create a reclined seating position which is extremely helpful if the patient has poor trunk stability and a tendency to overstress themselves (spastic performance) or are hypertonic. The reclined position prevents the user from sliding out of the sling and the reinforced head support makes this a suitable sling for lifting patients from the floor.

Additional Instructions

To staff/caregiver:

To patient:

Fitting Protocol Completed by:

Name	
Date	Position/Title



Important! This fitting protocol does not replace the user manual. Read all instructions before use!

Additional Documentation

Can be found on our website at www.humancaregroup.com/product-category/slings



Quick Reference Guide



User Manual



Sling Care Instructions



Sling Inspection Form

