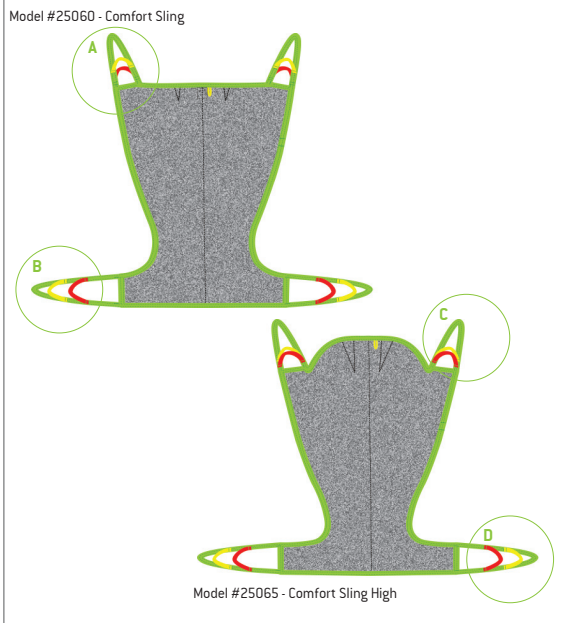




Fitting Protocol

Comfort Sling
Model 25060, 25065



Sling Loop Letter:

- Green Strap
- Yellow Strap
- Red Strap

Extension Loops

- 21180-10 (10cm/3.9")
- 21180-15 (15cm/5.9")
- 21180-20 (20cm/7.8")
- 21180-25 (25cm/9.8")
- 21180-35 (35cm/13.7")

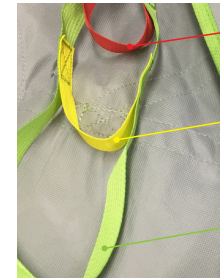
Sling Loop Letter:

- Green Strap
- Yellow Strap
- Red Strap

Extension Loops

- 21180-10 (10cm/3.9")
- 21180-15 (15cm/5.9")
- 21180-20 (20cm/7.8")
- 21180-25 (25cm/9.8")
- 21180-35 (35cm/13.7")

Choose the loop combination that will give the most comfortable and safe suspension angle, keeping in mind the patient's ability to support themselves.



Red Strap
Upright Position
Least hip angle

Yellow Strap
Semi-Recumbent
Mid-hip angle

Green Strap
Increased Recline
Less hip flex and
greatest angle

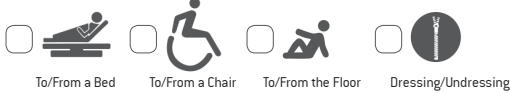
Match colours on both sides of the patient for a 90 degree angle in the hips.

Maximum User Weight: 250kg/551lb

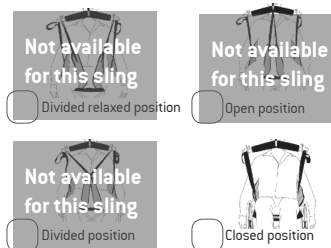
Model 25060 - Trevira

Model 25065 - Trevira

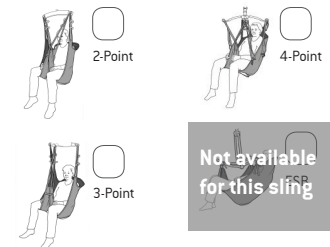
Transfer Situation:



Leg Placement:



Suspension:



Available sizes: Indicate size required



Accessories required:

- 21146 Leg Padding - Small
- 21146 Leg Padding - Medium
- 21146 Leg Padding - Large
- 25102 Reinforced Leg Support - One Size
- 50866 Upholstered Cover for Hanger Bar

Patient Information:

Name	
Facility	Room
Lift Used	Hanger Bar Used

HUMAN CARE SWEDEN (HQ)

Årstaängsvägen 21B
117 43 Stockholm
Phone: +46 8 665 35 00
Fax: +46 8 665 35 10
info.se@humancaregroup.com

HUMAN CARE AUSTRALIA

Unit 4, 49 Bertie Street
Port Melbourne, VIC 3207
Phone : +61 1300 132 736
Fax : + 61 (03) 9645 4954
info.au@humancaregroup.com

HUMAN CARE CANADA

10-155 Colonnade Road
Ottawa, ON K2E 7K1
Phone: +613.723.6734
Fax: +613.723.1058
info.ca@humancaregroup.com

HUMAN CARE NEDERLAND

Elspeterweg 124
8076 PA Vierhouten
Phone: +31 577 412 171
Fax: +31 577 412 170
info.nl@humancaregroup.com

HUMAN CARE UNITED STATES

8006 Cameron Road, Suite K
Austin, TX 78754
Phone: +512.476.7199
Fax: +512.476.7190
info.us@humancaregroup.com

Our Comfort Slings are designed to give the patient comfort and a sense of safety. The undivided legs evenly distribute the patients weight to reduce pressure and the soft Trevira fabric promotes less repositioning making this sling a suitable choice for patients with pain. In addition, the material does not promote skin breakdown and can therefore be left behind the patient for a short periods of time. The Comfort Slings is available in two models, one shoulder height model and one with extra head support.

Additional Instructions

To staff/caregiver:

To patient:

Fitting Protocol Completed by:

Name		
Date	Position/Title	



Important! This fitting protocol does not replace the user manual. Read all instructions before use!

Additional Documentation

Can be found on our website at www.humancaregroup.com/product-category/slings



Quick Reference Guide



User Manual



Sling Care Instructions



Sling Inspection Form

