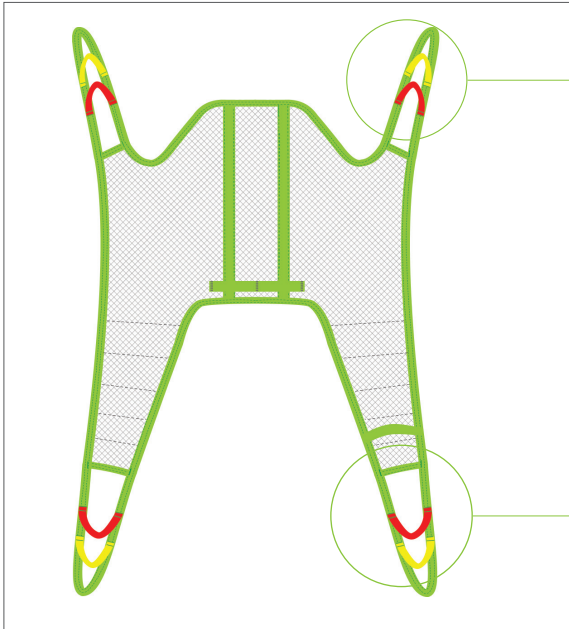




Fitting Protocol

Bath Sling
Model 25035

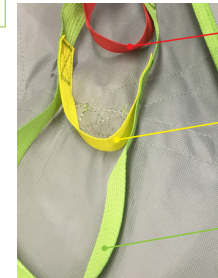


- Green Strap
- Yellow Strap
- Red Strap

Extension Loops

- 21180-10 (10cm/3.9")
- 21180-15 (15cm/5.9")
- 21180-20 (20cm/7.8")
- 21180-25 (25cm/9.8")
- 21180-35 (35cm/13.7")

Choose the loop combination that will give the most comfortable and safe suspension angle, keeping in mind the patient's ability to support themselves.



- Red Strap**
Upright Position
Least hip angle
- Yellow Strap**
Semi-Recumbant
Mid-hip angle
- Green Strap**
Increased Recline
Less hip flex and greatest angle

- Green Strap
- Yellow Strap
- Red Strap

Extension Loops

- 21180-10 (10cm/3.9")
- 21180-15 (15cm/5.9")
- 21180-20 (20cm/7.8")
- 21180-25 (25cm/9.8")
- 21180-35 (35cm/13.7")

Match colours on both sides of the patient for a 90 degree angle in the hips.

Maximum User Weight: 250kg/551lb

Model 25035 - Polyester Net

Transfer Situation:

- To/From a Bed
- To/From a Chair
- Showering/Bathing

Available sizes: Indicate size required

- JS
- JM
- S
- M
- L
- XL

Leg Placement:

- Divided relaxed position
- Open position
- Divided position
- Closed position

Suspension:

- 2-Point
 - 4-Point
 - 3-Point
- Not available for this sling**

Accessories required:

- 21146 Leg Padding - Small
 - 21146 Leg Padding - Medium
 - 21146 Leg Padding - Large
 - 25102 Reinforced Leg Support - One Size
 - 25145.*
Waist Belt (Velcro)
 - 25146.*
Waist Belt (Safety Buckle)
- | | |
|------------------------|---------------------------------------|
| *Junior Sizes | *Adult Sizes |
| -40B (40cm/15.7") | -60 (60cm/23.6") |
| -50B (50cm/19.7") | -70 (70cm/27.6") |
| -60B (60cm/23.6") | -80 (80cm/31.5") |
| | -90 (90cm/34.4") |
| Size (eg. -60B) | -100 (100cm/39.4") |
| <input type="text"/> | -110 (110cm/43.3") |
| | -120 (120cm/47.3") |
| | -130 (130cm/51.2") |
| | <small>*only for Model #25146</small> |

Patient Information:

Name

Facility Room

Lift Used Hanger Bar Used

HUMAN CARE SWEDEN (HQ)
Årstaängsvägen 21B
117 43 Stockholm
Phone: +46 8 665 35 00
Fax: +46 8 665 35 10
info.se@humancaregroup.com

HUMAN CARE AUSTRALIA
Unit 4, 49 Bertie Street
Port Melbourne, VIC 3207
Phone: +61 1300 132 736
Fax: + 61 (03) 9645 4954
info.au@humancaregroup.com

HUMAN CARE CANADA
10-155 Colonnade Road
Ottawa, ON K2E 7K1
Phone: +613.723.6734
Fax: +613.723.1058
info.ca@humancaregroup.com

HUMAN CARE NEDERLAND
Elsperweg 124
8076 PA Vierhouten
Phone: +31 577 412 171
Fax: +31 577 412 170
info.nl@humancaregroup.com

HUMAN CARE UNITED STATES
8006 Cameron Road, Suite K
Austin, TX 78754
Phone: +512.476.7199
Fax: +512.476.7190
info.us@humancaregroup.com

The Bath Sling can be used in most lifting situations and fits most patients but is most suitable for wet environments. Made of Polyester Net fabric, it dries quickly and can be left behind the patient for a short period of time after the transfer is complete, making it an ideal option for bathing or showering. It is a soft, comfortable material that can also be used for rehabilitation in pool areas. The Bath Sling creates an upright seating position and can be used with or without a back belt.

Additional Instructions

To staff/caregiver:

To patient:

Fitting Protocol Completed by:

Name		
Date	Position/Title	



Important! This fitting protocol does not replace the user manual. Read all instructions before use!

Additional Documentation

Can be found on our website at www.humancaregroup.com/product-category/slings



Quick Reference Guide



User Manual



Sling Care Instructions



Sling Inspection Form

