



Our HeliQ lift is a modern, discreet stationary lift that can be installed in a rail system or freestanding gantry system. It is a solution suitable for both acute care facilities, nursing homes or home care environments.

Contemporary Design

The HeliQ stationary overhead lift features a modern, discreet look that easily fits into any environment. Its small size ensures ease of use in either institutional or home care applications. The lift comes in three different models with three different weight capacities. It allows optimal patient comfort with 2-point or 4-point hanger bars in different lengths to suit virtually any patient.

Lift Intelligence

The HeliQ features an advanced technology platform that allows tracking of lift usage and visualization of collected data. This integrated lift intelligence allows data to be retrieved using our Data and Service

Application on a tablet or computer. Detailed information can be viewed directly in the application or exported to other media for additional analysis.

Power Traverse and In-Rail Charging

The HeliQ lifts have an option to be connected to a power traverse, enabling lateral motorized movement, including the possibility of passing curtain gaps in rails. The HeliQ power traverse has dual speed, high water protection (IPX4) and a 300kg/661lb safe working load. The HeliQ can also work with in-rail charging, allowing the lift to be ready for use at all times.

HUMAN CARE SWEDEN (HQ)

Årstaängsvägen 21B
117 43 Stockholm
Phone: +46 8 665 35 00
Fax: +46 8 665 35 10
info.se@humancaregroup.com

HUMAN CARE AUSTRALIA

Unit 4, 49 Bertie Street
Port Melbourne, VIC 3207
Phone : +61 1300 132 736
Fax : + 61 (03) 9645 4954
info.au@humancaregroup.com

HUMAN CARE CANADA

10-155 Colonnade Road
Ottawa, ON K2E 7K1
Phone: +613.723.6734
Fax: +613.723.1058
info.ca@humancaregroup.com

HUMAN CARE NEDERLAND

Elspeterweg 124
8076 PA Vierhouten
Phone: +31 577 412 171
Fax: +31 577 412 170
info.nl@humancaregroup.com

HUMAN CARE UNITED STATES

8006 Cameron Road, Suite K
Austin, TX 78754
Phone: +512.476.7199
Fax: +512.476.7190
info.us@humancaregroup.com

Accessories



Hanger bar

Three widths. Order separately. Part no.: 72754 (35cm/13.8") 72755 (45cm/17.7") 72757 (60cm/23.6")



Upholstered Cover

Protects user from hanger bar impact. Hanger bar sold separately. Part no. 50866



4-point suspension

Enables 4-point lifting. Part no.: 70800



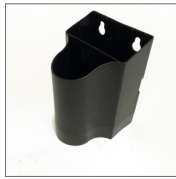
Power traverse

Enables lateral motorized movement. Order with lift.



Powered spreader bar

For use with clip slings in hospital or other care environments. Part no.: Small 92441, Medium 92442, Large 92443



Lift charger

Charger with holder. Easily attaches to wall. Part no. 50899-US



Distance Strap

Reinforced nylon thread and metal hooks. Extend lift strap up to 100cm/39.3". Part no. 20124-xx (specify length)



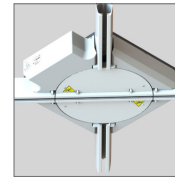
Scale

Medical grade scale. Max. capacity 320kg/705.5lb. ISO and EN compliant. Part no.: 50348, 50345 (Canada)



Handset

Input for charging and USB interface. IPX5 water protection rating. Part no.: 71458 (71459 for Power Traverse lift)



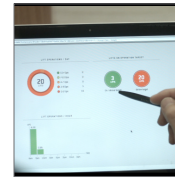
Gates and Turntables

Offering additional lift transfer options on rails. Part no. 55721 (Gate), 91884 (Turntable)



Secondary Control

Secondary control panel on back of lift for emergency stop function. Integrated feature.



Insights

Lift intelligence that facilitates cloud based storage of collected data. Integrated feature.

Technical Specifications

| Description | HeliQ 150 | HeliQ 220 | HeliQ 300 |
|------------------------------|--|----------------------|----------------------|
| Part Number | 55100-[Country Code] | 55110-[Country Code] | 55120-[Country Code] |
| Part Number (Power Traverse) | 55130-[Country Code] | 55140-[Country Code] | 55150-[Country Code] |
| Part Number (Hanger Bar) | 72754, 72755, 75757 | 72754, 72755, 75757 | 72754, 72755, 75757 |
| Dimensions (W x H x L) | 23.5cm x 23.5cm x 14cm 9.2" x 9.2" x 5.5" | | |
| Safe Working Load | 150kg/330lb | 220kg/484lb | 300kg/661lb |
| Product Weight (Lift) | 76kg / 16.7lb | | |
| Product Weight (Hanger Bar) | 0.9kg/2.1lb (72754), 1.1kg/2.5lb (72755), 1.4kg/3.1lb (72757) | | |
| Battery | 2.3Ah, 2x12V | | |
| Battery Charger | Input: 100-240V, AC 50-60 Hz Output: 27.8V, 0.8A DC | | |
| IP Class | Lift: IPX4 Hand Control: IPX5 | | |
| Lifting Distance and Speed | Distance: 208cm/81.9" Speed: 1.8m/min - 3m/min — 70"/min - 118"/min | | |
| Approvals | ROHS-2 approved, Tested and approved according to ISO 10535:2006 ETL Listed | | |
| Emergency Lowering | Electronic and Mechanical | | |

Country Codes: AU-Australia, GB-Great Britain, EU-Europe, JP-Japan, NA-North America

Follow Us on Social Media



facebook.com/humancareworld



instagram.com/humancaregroup



linkedin.com/company/human-care-ab



pinterest.com/humancaregroup



youtube.com/channel/UC7fjN3zTjR0P1IDf2Da0

This product is manufactured in accordance with all relevant ISO standards.



Learn more about this product

